

AUTOMOTIVE

**EXO
SOFT
MULTILAYER
PANNEL
COVER.**

ALCANTARA

Alcantara® EXO – 9604 exo SCHWARZ/BLACK

Alcantara® MULTILAYER – 9040 ML SCHWARZ/BLACK

Alcantara® Cover SCHWARZ/BLACK

Alcantara® Pannel SCHWARZ/BLACK

Alcantara® SOFT SCHWARZ/BLACK



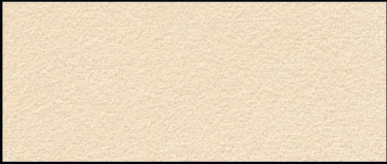
2911 perlweiß



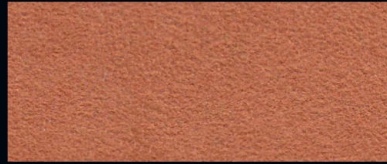
1108 sandrose



4914 sienna



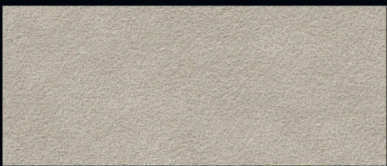
2984 helios



2292 beige



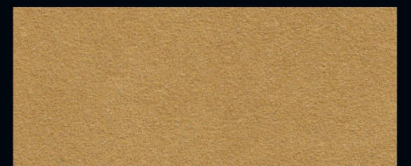
2930 haselnuß



2901 champignon



1594 crema



1125 karamell



1112 tartufo hell



2974 java



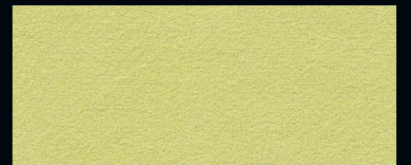
1452 lemongelb



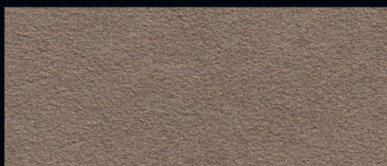
2920 pergament



1110 amber glow



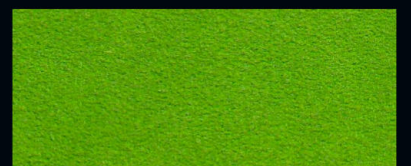
1045 linde



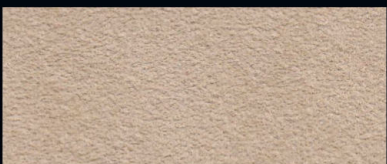
2293 tortora



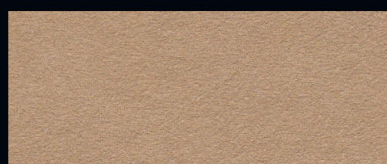
2909 natur hell



1581 lizard green



2100 sabbia



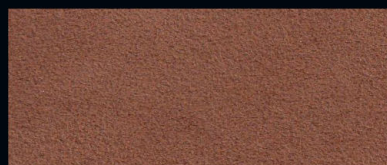
2940 moccasin



3314 verde pan



1510 perlrosa



4415 marrone



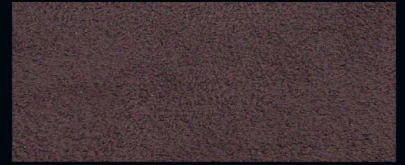
3322 kaki



6676 verde posh



2916 rubin



9714 cioccolato



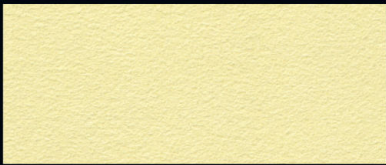
9073 smaragd



9076 weinrot



9500 dunkelbraun



1041 zartgrün



2846 barola



9036 aubergine



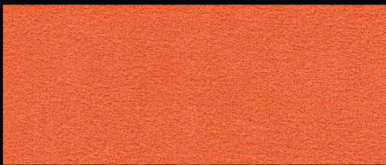
1352 volcano yellow



2439 bordeaux



5226 dark purple



2969 mango



4897 terra bruciata



8813 dark brown



2014 arancio drioep



4859 iroko



9980 tiefblau



4996 rot



2910 schoko



9041 stahlblau



3679 rosso



6833 raw amber



6408 signalblau



9022 tobago



5751 ozean



6406 tiefgrün



5432 blue sterling



6632 blu medio



1398 gris rafale



1363 teal blue



2156 mint



4978 silbergrau hell



1259 divo racing blue



2932 mausgrau



2942 sandgrau



1934 light blue sport



2938 basalt



2934 oriongrau



2853 french racing blue



5919 grau



7052 dark grey



7586 kobalt



2957 schiefer



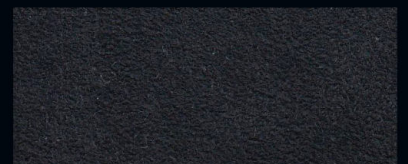
9052 dunkelgrau



7687 bombayblau



6609 blu navy



9806 beluga black



9002 schwarz **9002SOFT***



9040 schwarz **9040SOFT***

Alcantara® MULTILAYER



0440ML linen



7200ML brunel



8800ML burnt oak



1400ML camel



7000ML cumbrian green



2304ML schwarz/onyx



3880ML saddle



8500ML imperial blue



9040ML tiefschwarz



4220ML porpoise

Alcantara® EXO



9604exo schwarz

** mit 3 mm Schaumkaschierung / with 3mm foam lamination*

MULTILAYER Speziell für Lenkräder / *Specially for steering wheels*

EXO Speziell für den Außenbereich Motorradsättel / *Specially for outdoor motorcycle seats*

Alcantara® Multilayer – 9040 ML SCHWARZ/BLACK

COMPOSITION	ALCANTARA	POLYESTER	71 ± 4	%	
		POLYURETHANE	29 ± 4	%	
THICKNESS			1,2 ± 0,2	mm	
UNIT WEIGHT		EN 29073-1	390 ± 60	g/m ²	
WIDTH			142	cm	
BREAKING LOAD	lengthwise	EN ISO 13934-1	600	N/5cm	
	crosswise	EN ISO 13934-1	400	N/5cm	
TEAR RESISTANCE	lengthwise	EN ISO 13937-3	30	N	
	crosswise	EN ISO 13937-3	30	N	
MARTINDALE ABRASION 12kPa		EN ISO 12947-4	20.000*	cycles	
	end point	EN ISO 12947-2	150.000	cycles	
COHESION		EN ISO 2411	12	N	
COLOUR FASTNESS**					
	TO LIGHT	VDA 75202	3	grey scale (1-5)	
	TO RUBBING				
		dry	EN ISO 105-X12	4	white scale (1-5)
		wet	EN ISO 105-X12	3	white scale (1-5)

* slight change in the appearance of product surface

** shade variations, due to the process technology, are possible on this quality

Alcantara® Exo – 9604 exo SCHWARZ/BLACK

THICKNESS			≤ 1,3	mm	
UNIT WEIGHT		EN 29073-1	≥ 310	g/m ²	
WIDTH			≥ 142	cm	
DIMENSIONAL STABILITY	water 40°C	EN 25077, EN ISO 6330	≤ 3	%	
BREAKING LOAD	lengthwise	EN ISO 29073-3	≥ 600	N/5cm	
	crosswise	EN ISO 29073-3	≥ 400	N/5cm	
ELONGATION AT 50 N	lengthwise	EN ISO 13934-1	≥ 2,5	%	
	crosswise	EN ISO 13934-1	≥ 6	%	
TEAR RESISTANCE	lengthwise	EN ISO 13937-3	≥ 30	N	
	crosswise	EN ISO 13937-3	≥ 30	N	
MARTINDALE ABRASION 12kPa		EN ISO 12947-4	≥ 20.000*	cycles	
	end point	EN ISO 12947-2	≥ 150.000	cycles	
WATER IMPERMEABILITY		EN 20811	≥ 2	meters H ₂ O	
WATER VAPOR PERMEABILITY		UNI 4818/26	≥ 300	gr/m ² da	
COHESION		EN ISO 2411	≥ 10	N	
RESISTANCE TO PILLING	2000 cycles	EN ISO 12945-2	≥ 4,5		
COLOUR FASTNESS**					
	TO LIGHT				
		EN ISO 105-B02	≥ 7	blue scale (1-8)	
		ASTM G154-06	≥ 3,5	grey scale (1-5)	
	TO RUBBING				
		dry	EN ISO 105-X12	≥ 4	white scale (1-5)
		wet	EN ISO 105-X12	≥ 3	white scale (1-5)

* slight change in the appearance of product surface

** shade variations, due to the process technology, are possible on this quality

Alcantara® Cover 41 FARBEN / COLOURS

			5205	5267		
COMPOSITION	ALCANTARA®	POLYESTER	68	68	%	
		POLYURETHANE	32	32	%	
		backing	POLYESTER	65	65	%
			COTTON	35	35	%
THICKNESS			≥ 0,95	≥ 0,95	mm	
UNIT WEIGHT		UNI EN 29073-1	≥ 325	≥ 400	g/m ²	
WIDTH			≥ 142	≥ 142	cm	
BREAKING LOAD	lengthwise	UNI EN 29073-3	≥ 700	≥ 700	N	
			transversal	≥ 400	≥ 400	N
WEAR RESISTANCE	martindale	UNI EN ISO 12947-1/2/3/4	≥ 30.000	≥ 30.000	cycles*	
				≥ 150.000	≥ 150.000	cycles**
COLOUR FASTNESS						
TO LIGHT	xenotest Beta	VDA 75202 (2 FAKRA)	≥ 3	≥ 3	grey scale	
TO RUBBING	dry	UNI EN ISO 105-X12	≥ 4	≥ 4	white scale	
			wet	UNI EN ISO 105-X12	≥ 3/4	≥ 3/4
COHESION		UNI EN ISO 2411	≥ 10	≥ 10	N	
FR VERSION	fire resistance	FMVSS 302		< 100	mm/min	

* no significant change in surface appearance

** end point

Alcantara® Cover is also available in the version Flame Retardant (FR), comply with the directive 95/28 CE.

FR product code: 5268**Alcantara® Pannel** 41 FARBEN / COLOURS

			5012	5256	
COMPOSITION	ALCANTARA®	POLYESTER	68	68	%
		POLYURETHANE	32	32	%
THICKNESS			0,83	0,85	mm
UNIT WEIGHT		UNI EN 29073-1	230	285	g/m ²
WIDTH			≥ 142	≥ 142	cm
BREAKING LOAD	lengthwise	UNI EN 29073-3	≥ 220	≥ 220	N
			transversal	UNI EN 29073-3	≥ 170
WEAR RESISTANCE	martindale	UNI EN ISO 12947-1/2/3/4	≥ 30,000	≥ 30,000	cycles*
				≥ 150,000	≥ 150,000
COLOUR FASTNESS					
TO LIGHT	xenotest Beta	VDA 75202 (2 FAKRA)	≥ 3	≥ 3	grey scale
TO RUBBING	dry	UNI EN ISO 105-X12	≥ 4	≥ 4	white scale
			wet	UNI EN ISO 105-X12	≥ 3/4
FR VERSION	fire resistance	FMVSS 302		< 100	mm/min

* no significant change in surface appearance

** end point

Alcantara® Pannel is also available in the version Flame Retardant (FR), comply with the directive 95/28 CE.

FR product code: 5856

Wasserlösliche Flecken

Zur Reinigung von Alcantara® wird empfohlen, die dafür vorgesehenen Produkte zu verwenden, deren Liste Sie auf der Website www.alcantara.com unter „Wartung“ finden. Sollten diese Produkte nicht zur Verfügung stehen, wird je nach Fall die Verwendung von Wasser, Zitronensaft oder reinem Ethylalkohol (Weingeist) empfohlen. Die diesbezüglichen Reinigungsverfahren sind nachstehend beschrieben. Für weitere Informationen besuchen sie bitte unsere Website unter www.alcantara.com

Water-soluble stains

It is recommended that you use the specific products for Alcantara® cleaning, a list of which is available on www.alcantara.com in the section maintenance; if they are not at your disposal, it is recommended, depending on the type of stain, that you should use water, lemon juice, or pure ethyl alcohol (from liquors) and follow the instructions below. For further information visit our web site www.alcantara.com

Tâches solubles dans l'eau

Il est conseillé d'utiliser des produits spéciaux pour le nettoyage d'Alcantara®, dont vous trouverez la liste sur le site www.alcantara.com dans la section entretien. A défaut de produits, il est préférable d'utiliser, selon le cas, de l'eau ou du jus de citron, ou encore de l'alcool éthylique pur (pour liqueurs) et suivre les procédures indiquées ci-dessous. Pour plus d'information, merci de visiter notre site internet www.alcantara.com

Macchie solubili in acqua

E' consigliato l'impiego di prodotti specifici per la pulizia di Alcantara®, un elenco dei quali è riportato nel sito www.alcantara.com nella sezione manutenzione; nel caso non si disponga di questi, è consigliato a secondo dei casi, l'impiego di acqua, oppure succo di limone, oppure alcol etilico puro (da liquori) e seguendo le procedure di seguito indicate. Per maggiori dettagli visita il nostro sito web www.alcantara.com

Fruchtsäfte, Marmelade, Gelatine, Sirup, Ketchup.	Mit lauwarmem Wasser auswaschen und mit sauberem Wasser ausspülen und abtupfen.
Blut, Eier, Kot und Urin.	Mit kaltem Wasser auswaschen. Warmes Wasser, das diese Substanzen gerinnen lässt, sollte vermieden werden. Mit sauberem Wasser ausspülen und abtupfen.
Liköre, Wein, Bier, Cola und Tee.	Mit lauwarmem Wasser auswaschen. Farbige Flecken sollten mit Zitronensäure behandelt werden. Gut ausspülen.
Kopierstift, Kakao, Schokolade, Creme- und Schokoladensüßigkeiten, Eis, Senf.	Mit lauwarmem Wasser auswaschen. Mit sauberem Wasser ausspülen und abtupfen.
Essig, Haargel, Tomatensoße, gezuckerter Kaffee.	Mit Zitronensäure behandeln und mit lauwarmem Wasser auswaschen. Mit sauberem Wasser ausspülen und abtupfen.

Fruit juice, jam, jelly, syrup, ketchup.	Use lukewarm water, rinse by dabbing with clean water.
Blood, egg, excrement, urine.	Use cold water; avoid warm water because it makes these substances coagulate, rinse by dabbing with clean water.
Liquors, alcoholic beverages, wine, beer, coke and tea.	Use lukewarm water, if the colour mark remains, treat it with lemon juice and then rinse it well.
Copying pencil, cocoa, chocolate, pastry with cream or chocolate, ice-cream, mustard.	Use lukewarm water, rinse by dabbing with clean water.
Vinegar, hair gel, tomato juice, coffee with sugar.	Use lemon juice and then wipe with lukewarm water, rinse by dabbing with clean water.

Jus de fruit, confiture, gélatine, sirop, ketchup.	Utilisez de l'eau à peine tiède; rincez en tamponnant avec de l'eau claire.
Sang, oeuf, selles et urines.	Utilisez de l'eau froide; évitez l'eau chaude qui pourrait faire coaguler ces substances; rincez en tamponnant avec de l'eau propre.
Liqueurs, vin, bière, cola et thé.	Utilisez de l'eau à peine tiède; si la tâche résiste, traitez-la avec du jus de citron et rincez abondamment.
Crayon à encre, cacao, chocolat, gâteaux à la crème et au chocolat, glace, moutarde.	Utilisez de l'eau à peine tiède; rincez en tamponnant avec de l'eau propre.
Vinaigre, gel pour cheveux, sauce tomate, café sucré.	Utilisez du jus de citron puis repassez avec de l'eau à peine tiède; rincez en tamponnant avec de l'eau propre.

Succo di frutta, marmellata, gelatina, sciroppo, ketchup.	Usare acqua appena tiepida; risciacquare tamponando con acqua pulita.
Sangue, uovo, feci e urina.	Usare acqua fredda; evitare l'acqua calda che fa coagulare queste sostanze; risciacquare tamponando con acqua pulita.
Liquori alcolici, vino, birra, coca e the.	Usare acqua appena tiepida; se resta la chiazza di colore trattarla con succo di limone e poi sciacquare bene.
Matita copiativa, cacao, cioccolata, dolci alla crema e al cioccolato, gelato, senape.	Usare acqua appena tiepida; risciacquare tamponando con acqua pulita.
Aceto, gel per capelli, salsa di pomodoro, caffè con zucchero.	Usare succo di limone e poi ripassare con acqua appena tiepida; risciacquare tamponando con acqua pulita.



Hans Reinke
Handelsgesellschaft mbH

Brandstücken 20 Tel. +49 40 39 10 68-0
22549 Hamburg Fax +49 40 39 10 68-29
info@hans-reinke.com www.hans-reinke.com

NETHERLANDS, BELGIUM & LUXEMBOURG



Hans Reinke Benelux B.V.

Bukumweg 2A Tel. +31 13 505 6702
5081 CT Hilvarenbeek Fax +31 13 505 3073
Netherlands info@hans-reinke.nl

SWITZERLAND, AUSTRIA & FRANCE



Jörg & Reinke GmbH

Schärischachen 809d Tel. +41 34 402 5005
CH-3552 Fax +41 34 402 55 53
Bärau info@joerg-leder.ch

POLAND



Automotive Textiles

Jakub Ponczyński Tel. +48 42 288 10 10
93-490 Łódź Mob. +48 513 014 610
Pabianicka 119/131 jakub@ponczynski.com

ALCANTARA

Via Mecenate, 86 • 20138 Milano, Italy
Tel: +39 02 580301 • Fax: +39 02 58030451
info@alcantara.com • www.alcantara.com

Alcantara®
is a registered trademark
of Alcantara S.p.A.