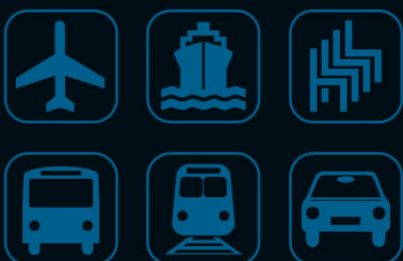
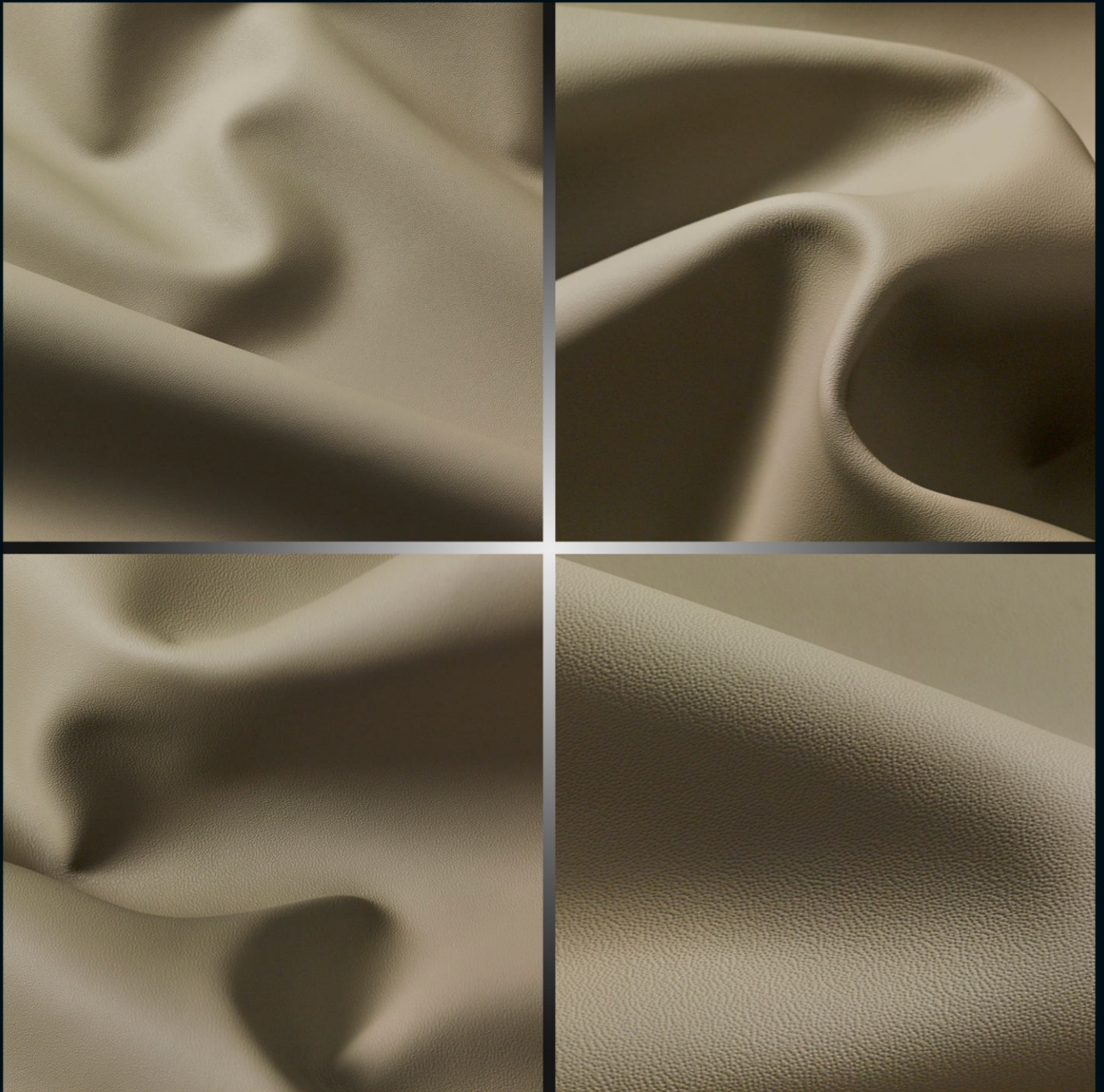




# Polsterleder *Upholstery Leather*



**Prima Nappa +  
Modulsystem**

**Prima **TEC****



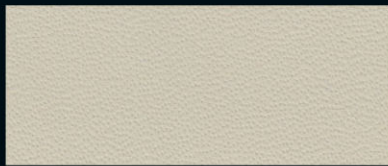
**1392** weiß



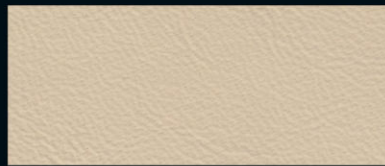
**0590BN** linen



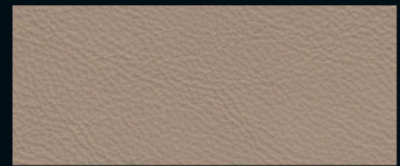
**1373** oak



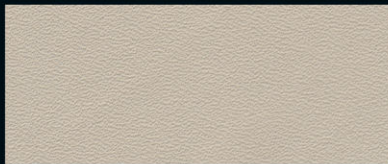
**6657BN** bianco polar



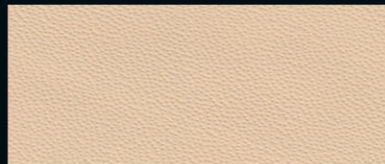
**1368** marble



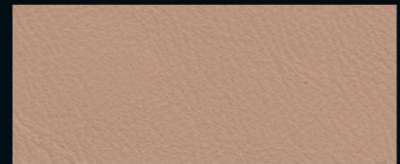
**1425** clay



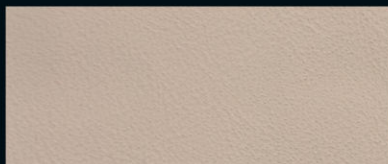
**1352** lotosweiß



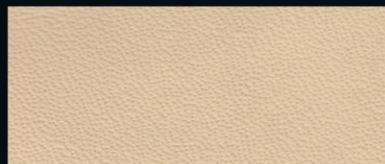
**0813BN** magnolia



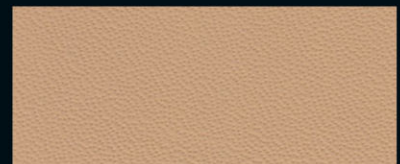
**1366** desert



**1353** kiesel



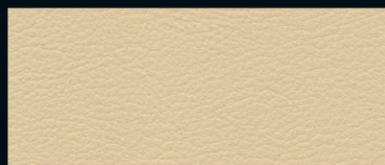
**3997BN** crema



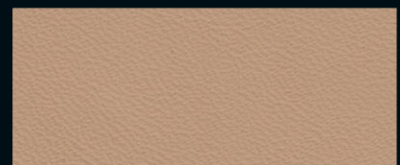
**0571BN** saffron



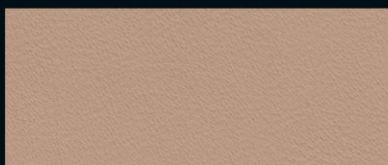
**1390** crema



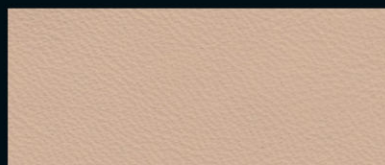
**1356** champagner



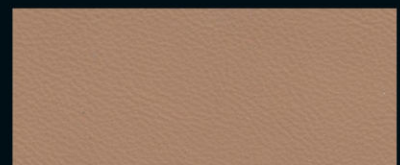
**1430** tauger



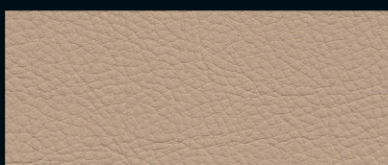
**1385** brittle



**1369** sesame



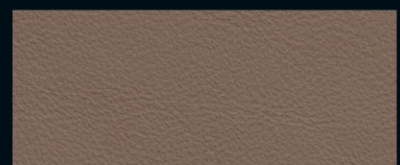
**1431** bengasi



**1384** sandbeige/java



**1386** cremeweiß



**1432** helios mittel



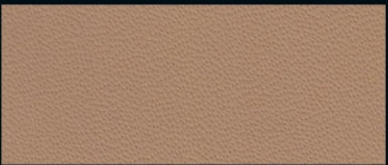
**1383** beige



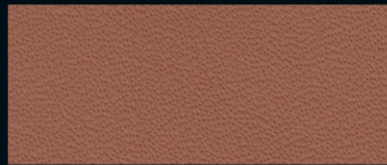
**0424BN** beige tradizione



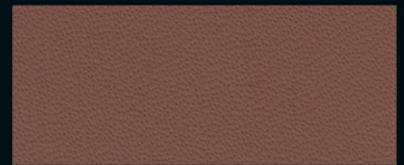
**1262BN** english tan



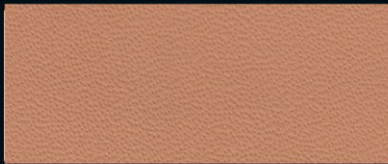
**1185BN** camel



**4609BN** cuoio



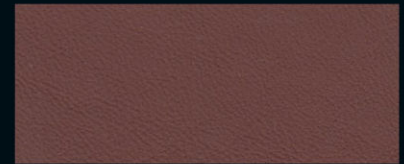
**0926BN** dark bourbon



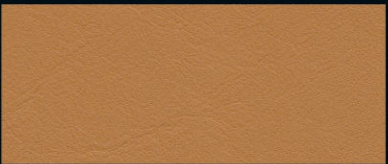
**4208BN** beige moderno



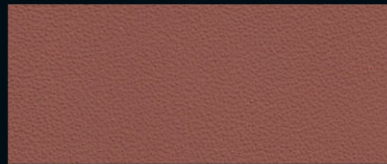
**0589BN** new market tan



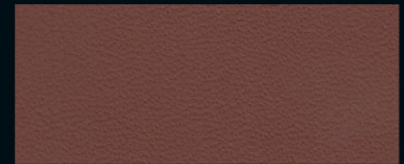
**1361** kastanienbraun



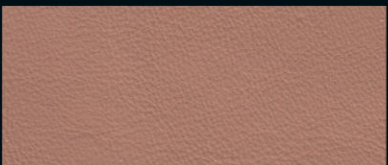
**1387** modena



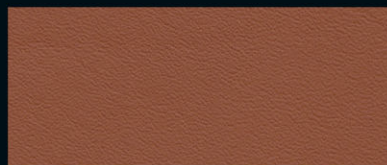
**1453** sienabraun



**1452** tartufo



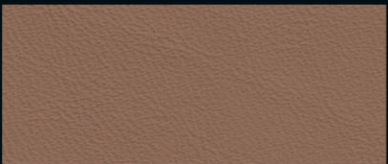
**0708BN** autumn



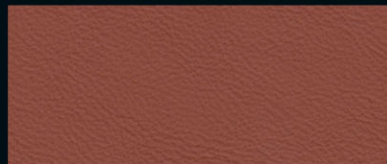
**1391** zimt



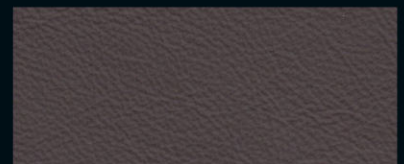
**1433** dattelbraun



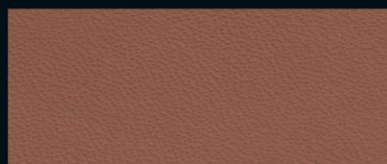
**1426** peat



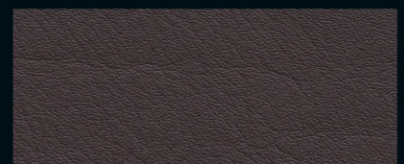
**1427** english tan



**1429** dark mocca



**0572BN** saddle



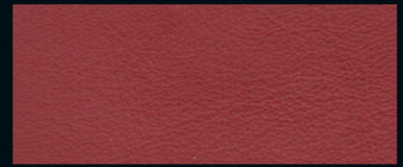
**1362** brasil



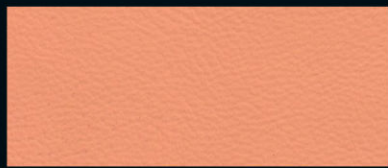
**1363** powder



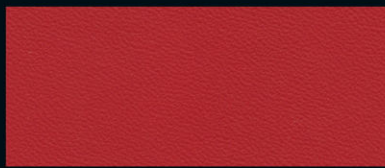
**1394** poppy



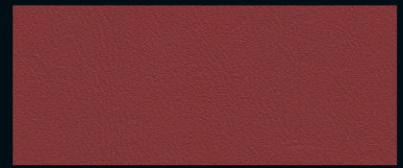
**1049BN** hotspur



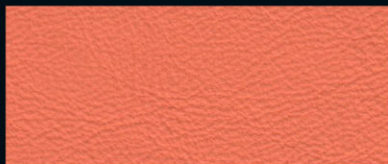
**1381** apricot



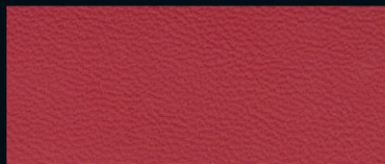
**1804** flashred



**1380** klassischrot



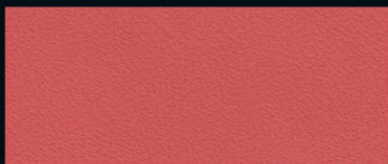
**1395** lava



**1393** cherry



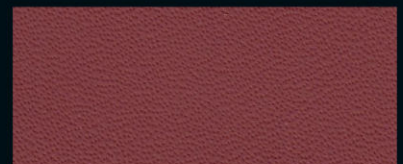
**9619BN** rosso rea dk



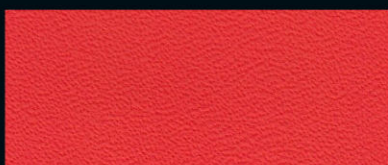
**1388** flamingo



**1364** mugellorot



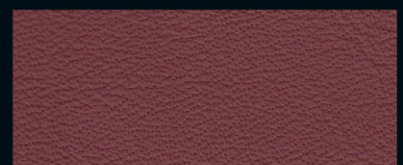
**4481BN** bordeaux



**6663BN** arancio dryope



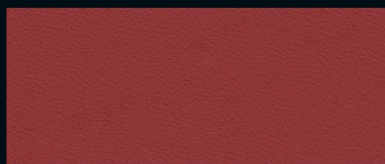
**1389** sportrot



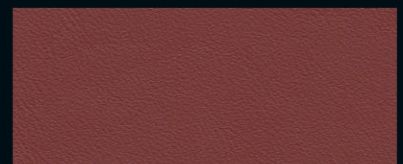
**0574BN** fireglow



**6832BN** rosso alala



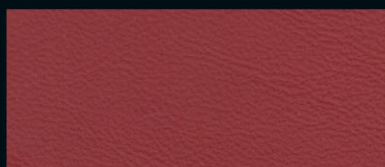
**1365** trinidadrot



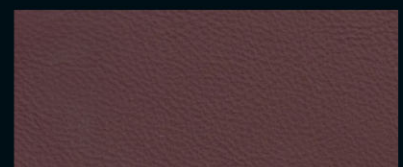
**1367** karmesinrot



**0421BN** rosso



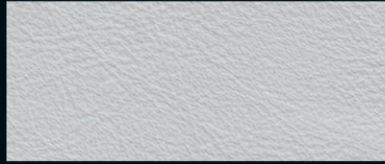
**1354** rot



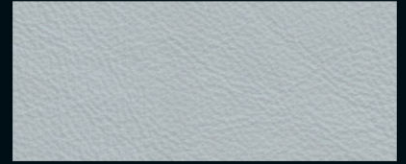
**1359** redwood



1375 lime



1415 gravel



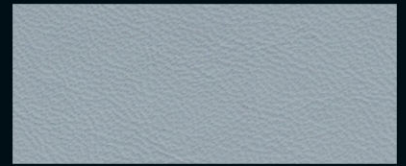
1414 white blue



1377 mustard



1419 kieselgrau



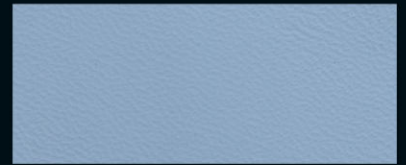
1402 ice



1410 kiwi



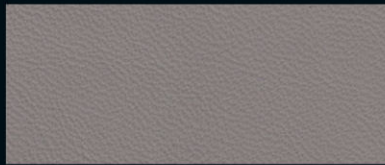
0591BN pergament hell



1401 sky



9504BN new verde



1421 cinder



1399 heaven



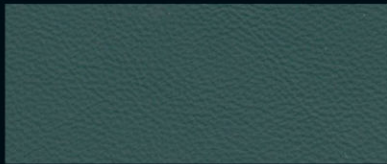
1411 pea



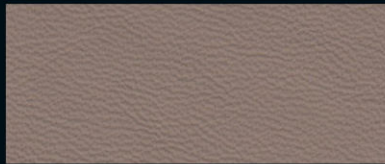
1422 basalt



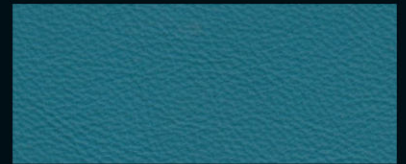
1396 atlantic



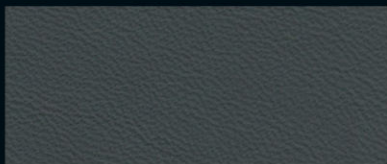
1412 nephrite green



1420 tartufo hell



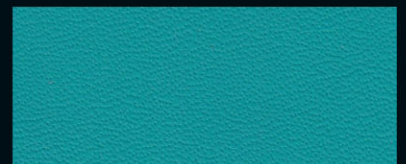
1400 lagoon



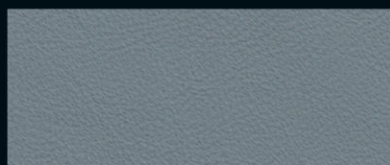
1413 steppe



1454 pool green



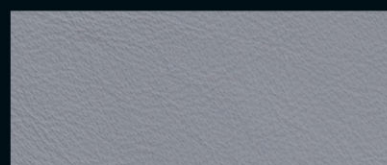
4753BN blu glauco



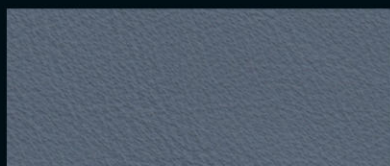
**1404** dove



**1407** denim



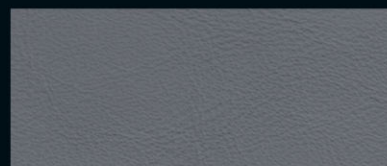
**1416** seagull



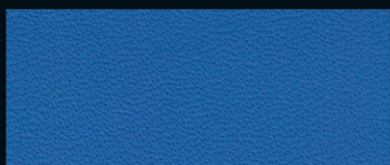
**1405** steelblue



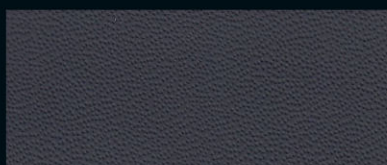
**1156BN** french navy



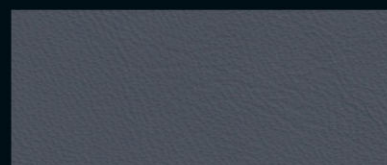
**1360** oriongrau mittel



**9259BN** blue amon



**1052BN** nauticblue



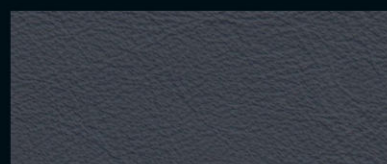
**1406** pazifikblau



**1397** santorinblau



**1370** ultramarin



**1434** graublau



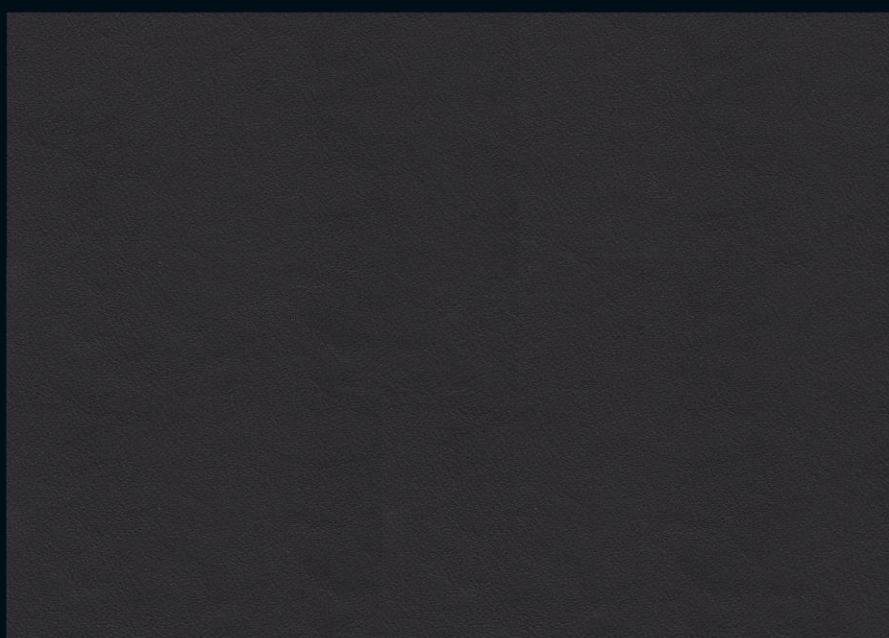
**1371** tobagoblau



**1408** mauritiusblau



**1409** royalblau



Kollektionsmuster sind keine Urmuster. Kleine Farbabweichungen sind möglich.  
*Swatches are no master samples. Small differences may occur.*



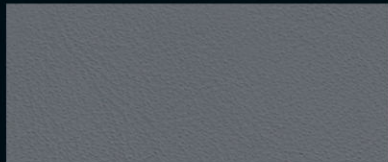
**1355** silbergrau hell



**1357** silbergrau



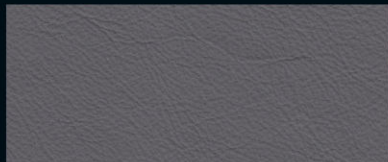
**1423** muschel



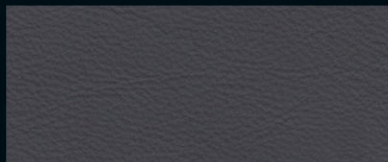
**1417** granitgrau dunkel



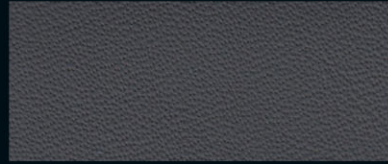
**1424** verkehrsgrau



**1358** silbergrau dunkel



**1418** grigio sirius



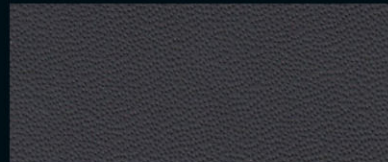
**7612BN** grigio octans



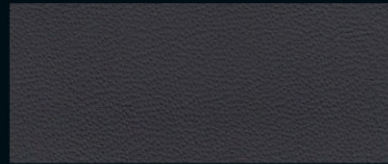
**1382** anthrazit hell



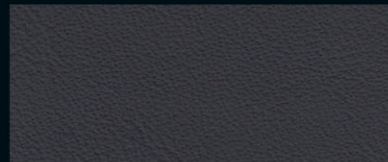
**0593BN** burnt oak



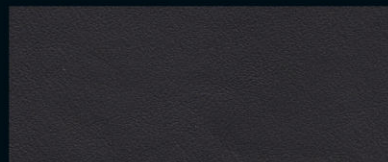
**1051BN** beluga black



**8500BN** nero



**6486BN** nero ade



**1351** schwarz



**Schiffe:** Für Ausstattungen von Segelschiffen, Yachten bis zu Ozeanriesen. Wenn ein IMO-Zertifikat benötigt wird, bitte auf Kennzeichnung der Häute hinweisen.

*Marine: For all marine upholstered fixtures and fitting needs from pleasure craft to ocean liners. IMO certification on the hides available on request.*

**IMO A.652 (8)**

---



**Automobile:** Der Artikel Prima Nappa ist vollumfänglich einsetzbar für den Automobilbereich.

*Automotive: Refurbishment of vehicles.*

**ECE R 118.02 Annex 6 und 7 (DIN 75200 / FMVSS 302)**

---



**Flugzeuge:** Linienmaschine, Privatjet oder Sportmaschine. Nähere Einzelheiten erhalten Sie auf Anfrage.

*Aviation: Commercial passenger aircraft, private jets and sporting aircraft. International and Federal Aviation requirements met or exceeded.*

**(Anfertigung ab 30 Häuten) FAR 25.853 a) und b)**

---



**Objektbereich:** Polstermöbel für Lobbies, Bestuhlungen für Konzertsäle und Konferenzräume, Tür- und Wandbespannungen und vieles mehr...

*Contract furnishing: For all contract upholstery purposes including public lobbies, concert halls, conference rooms. Also for door and wall covering needs.*

**DIN EN 1021 1 und 2  
California 117**

---

Einige Tests werden im Verbund mit Schaum, Vlies etc. durchgeführt. Änderungen des Aufbaus des Polstermöbels bedürfen einer erneuten Prüfung.

*Several of these tests are in composite form, made together with foam, woven and non woven fleece. Changes of combinations may require additional testing.*

---



# PRIMA NAPPA

| Narben korrigiert  
| *grain corrected*

<b>Technische Werte/ technical specifications</b>	<b>Meßmethode/ test methods</b>	<b>Werte/ values</b>
Stärke/ <i>strength</i>	DIN 53326	1,0 mm – 1,4 mm
Flächengewicht/ <i>mass per unit area</i>	DIN 53327	620 – 980 g/qm
Dehnungsprüfung/ <i>tension test</i> Höchstzugkraft/ <i>tensile test</i> Bruchdehnung/ <i>breaking elongation</i>	DIN 53328 Probekörper 2/ <i>specimen 2</i> Probekörper 2/ <i>specimen 2</i>	> 120 N 35 – 70 %
Weiterreißkraft/ <i>tear strength</i> längs/ <i>length</i> quer/ <i>across</i>	DIN 53329/A   DIN 53329/B	> 25 N   > 20 N
Dauerknickverhalten/ <i>flexion</i> längs/ <i>length</i> quer/ <i>across</i>	DIN 53351	20.000 Knickungen/ <i>flexes</i> : keine Rissbildung bei 6-facher Vergrößerung/ <i>no cracks at 6 times magnifying</i>
Dauerverhalten nach 1 Zyklus belichten/ <i>flexion after aging 1 period</i>		10.000 Knickungen/ <i>flexes</i> : keine Rissbildung bei 6-facher Vergrößerung/ <i>no cracks at 6 times magnifying</i>
Wasserdampfdurchlässigkeit/ <i>water vapour permeability</i>	DIN 53333	1,0 mg/qcm
Reibechtheit/ <i>rub fastness</i> trocken/ <i>dry</i> nass/ <i>wet</i> nass nach Wasserlagerung/ <i>wet after storage in water</i>	DIN EN ISO 11640	4 – 5 Note/class 4 – 5 Note/class 4 – 5 Note/class
Schweißlösung/ <i>sweat</i>		4 – 5 Note/class
Haftung der Zurichtung/ <i>topcoat adhesion</i>		3,5 N/cm
Heißlichtechtheit/ <i>hotlight fastness</i>	DIN 75202	5 – 7 Stufe Blauskala/ <i>class blue scale</i>
Brennprüfung/ <i>flammability</i>	FMVSS 302	< 100 mm/min
Geruchsprüfung/ <i>smelling test</i>	VDA 270 C3	< 3 Note/class

Kollektionsmuster sind keine Urmuster. Kleine Farbabweichungen sind möglich.  
*Swatches are no master samples. Small differences may occur.*

# Prima Nappa + Modulsystem

## Prima **TEC**

Zusätzlicher Flammenschutz wahlweise für:

| Flugzeuge FAR 25.853 a + b

| Objektbereich:

B1, B2, EMPA (5.3), BS 5852 (1990) crib 5

| andere auf Anfrage

**TEC I**

*additional flame protection alternatively for:*

| *airplane FAR 25.853 a+b*

| *contract furnishing:*

*B1, B2, EMPA (5.3), BS 5852 (1990) crib 5*

| *others upon request*

**Lieferzeiten/  
time of delivery**

**Prima Nappa**

**TEC I**

Mindestmenge/  
minimum order

ab 0,5 Haut/*from 0,5 hides*

Auf Anfrage/*on request*

Lieferzeit Tage/  
time of delivery days

sofort/*immediately*

Auf Anfrage/*on request*



Hans Reinke  
Handelsgesellschaft mbH

Brandstücken 20      Tel. +49 40 39 1068-0  
22549 Hamburg      Fax +49 40 39 1068-29  
info@hans-reinke.com      www.hans-reinke.com

NETHERLANDS, BELGIUM & LUXEMBOURG



Hans Reinke Benelux B.V.

Buksumweg 2A      Tel. +31 13 505 6702  
5081 CT Hilvarenbeek      Fax +31 13 505 3073  
Netherlands      info@hans-reinke.nl

SWITZERLAND, AUSTRIA & FRANCE



Jörg & Reinke GmbH

Schärishachen 809d      Tel. +41 34 402 5005  
CH-3552      Fax +41 34 402 55 53  
Bärau      info@joerg-leder.ch

POLAND



Automotive Textiles

Jakub Ponczyński      Tel. +48 42 288 10 10  
93-490 Łódź      Mob. +48 513 014 610  
Pabianicka 119/131      jakub@ponczynski.com